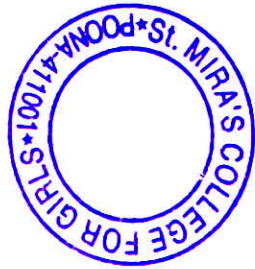


St. Mira's College for Girls, Pune
Autonomous (Affiliated to Savitribai Phule Pune University)

7.1.5 (QnM) Green campus initiatives include:

Geotagged photographs of the facilities



Jayab
Principal Incharge
St. Mira's College for Girls

St. Mira's College for Girls, Pune
Autonomous (Affiliated to Savitribai Phule Pune University)

7.1.5 (QnM) Green campus initiatives include

7.1.5.1. The institutional initiatives for greening the campus are as follows:

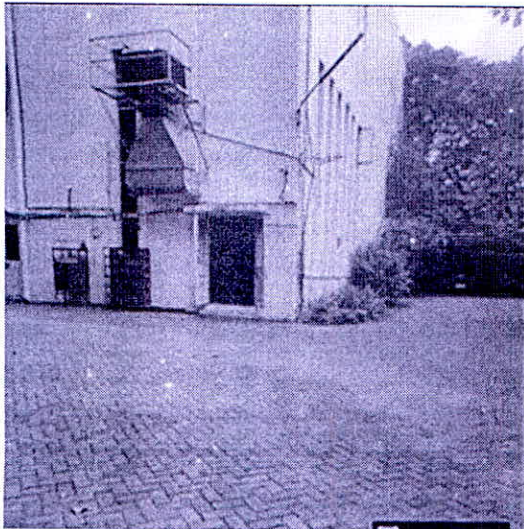
1. Restricted entry of automobiles



Lat 18.535406⁰ Long 73.885882⁰

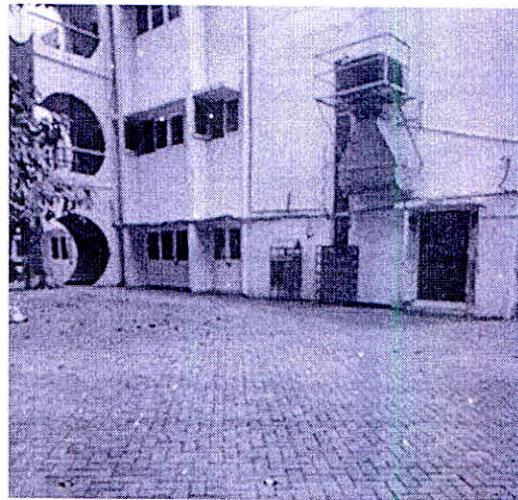
Pic. 1. Restricted Entry of Vehicles (28/09/2020)

2. Pedestrian-friendly pathways –



Lat 18.534754⁰ Long 73.886053⁰

Pic 2. Pathway_1 (05/11/2020)



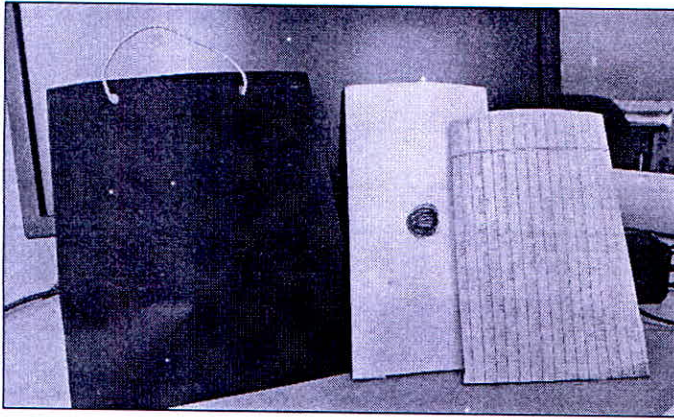
Lat 18.534929⁰ Long 73.886286⁰

Pic 3. Pathway_2 (05/11/2020)



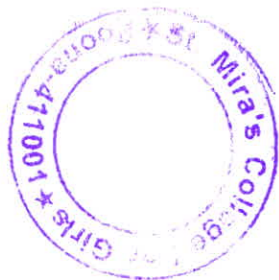
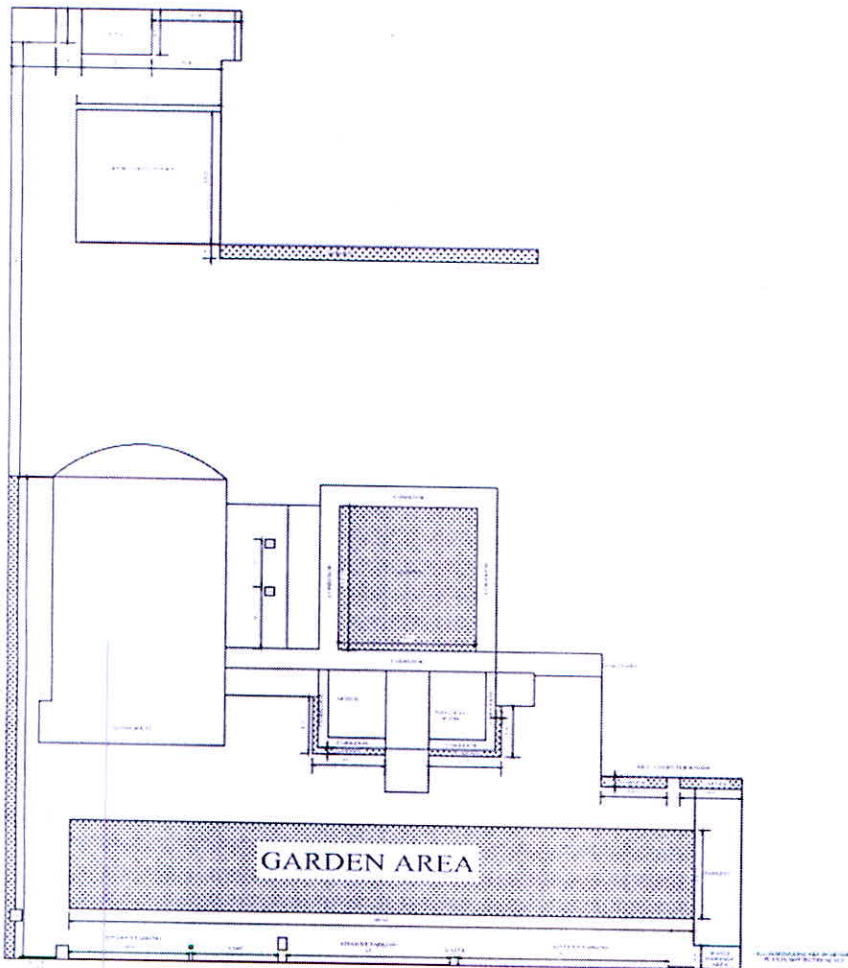

Principal Incharge
St. Mira's College for Girls, Pune.

4. Ban on use of plastic



Lat 18.534583⁰ Long 73.886203⁰
Pic 3. No Plastic_Paper_Bags (11/02/2021)

GREEN LANDSCAPING WITH TREES AND PLANTS

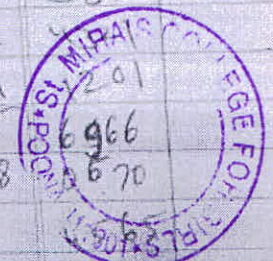



Principal Incharge
St. Mira's College for Girls, Pune.

7.1.5 (1A) Safety & Sec. 2 Wheeler Parking

10 = 20/7

1	4540	9879	8428	9013	8513	5167	1688	4636	1682	1435	4152
2	657	7820	9878	1574	3948	0245	4835	4365	1665	8777	3546
3	109	2897	7538	8684	1297	4844	7085	809	3285	0855	3024
4	8438	0833	4390	3539	6484	5337	2709	7877	8374	1566	2864
5	7275	9360	7045	8975	7663	6019	4096	3796	2848	6282	5362
6	816	1509	2076	4787	2778	2928	8262	1119	5804	6911	175
7	8366	3435	4390	5297	4604	1039	1252	1825	0661	4311	4804
8	8965	3866	5056	910	7139	2288	7476	1253	3130	7262	5140
9	4122	7715	4908	7353	3369	2530	3934	918	3097	9804	8241
10	7177	8809	6401	5213	5068	5598	1368	3870	9204	5212	8697
11	8680	3586	3157	9777	8742	1873	4599	5250	4759	8544	9717
12	5993	3670	0182	1695	3825	972	3078	382	7877	6899	9495
13	4375	1654	2381	7288	9514	4883	1098	6743	1891	7801	5643
14	9246	9457	999	1442	8982	4865	7021	3929	3679	6000	1468
15	1347	4325	0262	7550	5780	8839	1592	238	9770	2818	3327
16	1334	2936	8775	3798	2662	6190	3097	2724	2108	4015	3690
17	1235	9952	1149	2006	3066	8786	3338	9338	6751	7498	2572
18	208	8398	7515	7130	4611	8556	3822	5446	8233	5992	2242
19	5249	5961	7904	4427	5141	0785	3360	7282	8674	4191	9194
20	1757	7309	3368	5542	5557	9072	6641	3414	8149	8124	3833
21	5738	3078	3524	7157	3711	0399	3646	7040	2944	1139	9472
22	8989	3216	4918	6531	3439	1039	7802	5638	7496	7686	
23	7194	285	1408	6704	5037	9450	6644	2963	7291	6337	
24	7166	8512	8791	0053	9762	9084	3131	7349	0335	3950	
25	2461	3752	7759	8892	4523	2712	4592	4488	0582		
26	7117	6212	7389	6699	2931	6140	8036	7850	4314		
27	K	419	8563	5416	1721	6747	6618	3856	5085		
28	7629	320	4730	8539	7210	1084	3922	2579	6588		
29	5924	6717	1294	1075	8260	645	8469	0562	1607		
30	1032	0961	629	5087	1847	1639	9004	7224	8463		
31	9636	4178	9502	9162	4850	2411	6045	5543	3640		
32	5979	3741	6137	6368	1161	505	9199	6181	0451		
33	8261	6020	6137	4099	7876	7807	2481	5335	3753		



GPS Map Camera

Pune, Maharashtra, India

KoregaGear Garden, B No 2, SHOP NO 4, nr st mera collage,,
 Vasani Nagar, Koregaon Park, Pune, Maharashtra 411001, India

Lat 18.53533°
 Long 73.885812°
 26/02/22 12:23 PM

Principal Incharge
 Koregaon Park, Vasani Nagar, Vasani
 St. George's College for Girls, Pune

7-15

2 Wheeler Parking

St. Mira's College For Girls Pune

Autonomous Affiliated to Savitribai Phule Pune University

2017

classmate

Date	Bike No.	Phone No.	Sign	Rs.	Valid
20/11/17	MH12 2528/9451	9163960325	[Signature]	100	20/1/18
20/11/17	2346	8149508456	[Signature]	100	
1 Dec	MH12 P81410	8983075108	Jesal	100	30/1/18
16/11/17	MH12 HR 767	7219208792	[Signature]	100/-	16-2-18
7/12/17	8374	9657576298	[Signature]	100/-	21-2-18
22/11/17	MH12 29078	8087746021	Kaishree	100/-	11-2-18
11/12/17	MH12 EL28170	9112666065	[Signature]	100/-	
22/11/17	MH12 HH3534	8605405157	[Signature]	100/-	23-1-18
20/11/17	MH12 LY6630	8055534731	[Signature]	100/-	
18/11/17	MH12 JP 9055	8446153881	[Signature]	100/-	18/1/18
4/12/17	MH14 FH 3509	9689135430	[Signature]	100/-	4/2/18
2/12/17	MH12 KX 7602	8888278043	[Signature]	100/-	4/2/18
24/11/17	MH12 FG11640	9604858663	Nazul	100	24/1/18
16/11/17	MH12 KH 651	8237875616	[Signature]	100/-	16/1/2018
22/11/17	9433	775050492	[Signature]	100/-	22-1-18
22/11/17	MH12 7476	7066107853	[Signature]	100/-	22/1/2018
27/11/17	MH12 MD 8711	9175402614	[Signature]	100/-	27/1/2018
4/12/17	MH12 38752	7757017552	[Signature]	100/-	4/2/18
5/12/17	MH12 0767	8087417704	[Signature]	100/-	5/2/18
1/12/17	MH12 MT 5137	954764206	[Signature]	100/-	30/1/2018
4/12/17	MH12 1035420	7722038690	[Signature]	100/-	30/1/2018



JR
Principal Incharge
St. Mira's College for Girls, Pune.

GPS Map Camera



Pune, Maharashtra, India
KoregaGear Garden, B No 2, SHOP NO 4, nr st mera collage,,
Vasani Nagar, Koregaon Park, Pune, Maharashtra 411001, India
Lat 18.535343°
Long 73.885841°
26/02/22 12:24 PM

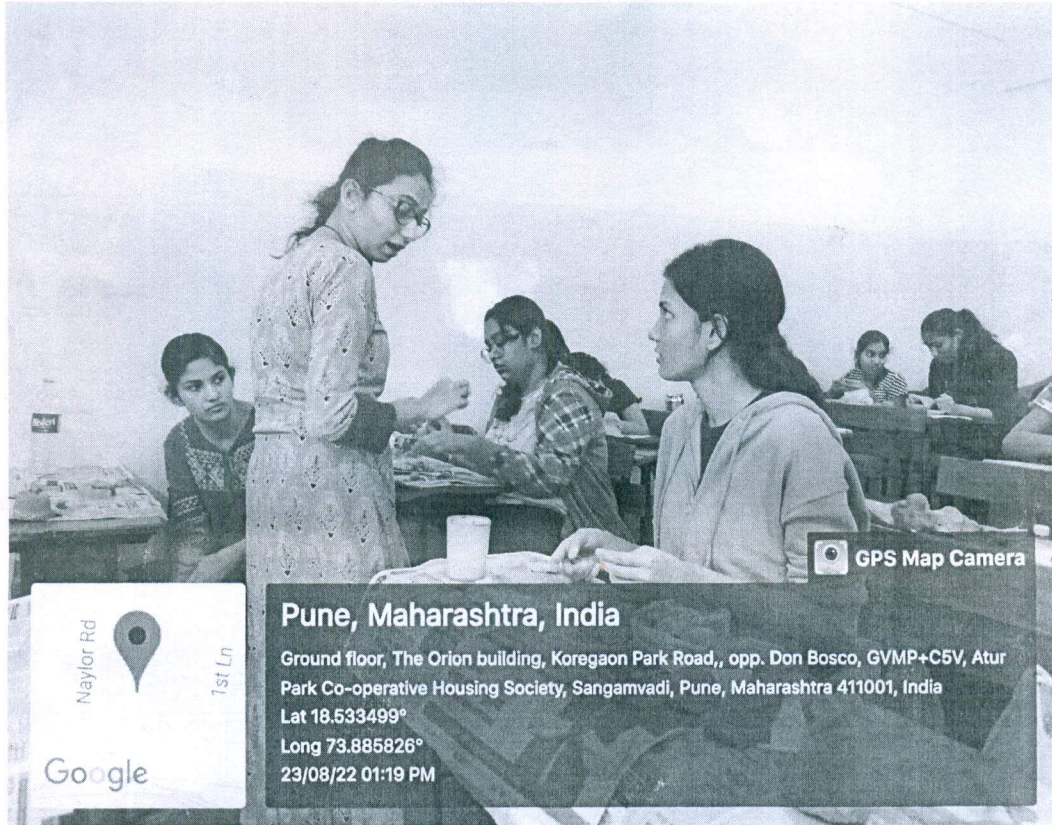
PIC No: 2 2017-2018

St. Mira's College for Girls, Pune
Autonomous (Affiliated to Savitribai Phule Pune University)

7.1.5: Ban on Plastic:

Green Bappa making workshop – 23.08.2022

Pictures:



Jyoti Chintan

Jyoti Chintan



JC
Principal Incharge
St. Mira's College for Girls, Pune.

You have extensions installed that may affect the quality of your call

Learn more Dismiss

3601- Hrutuja kale



4006_Yasmeen Pathan



3681 Rohini Gaikwad



4057_Ashmitra Shaikh



3667_Alisha_ShaiKh



3611_Vaishnavi Kshirsagar_SYBCOM



Dr. Arvind Madan



S K

52 others

You





37°C Sunny

ENG IN

[YouTube](#) | [Maps](#) | [Gmail](#) | [Translate](#) | [Cisco Webex Meeti...](#) | [Payment Details | C...](#) | [Shodganga](#) | [TLC Ramanujan Coll...](#) | [Article Rewriter Too...](#)

Dr. Arwah Madan is presenting

You have extensions installed that may affect the quality of your call

The screenshot shows a presentation slide with the title "COMMITMENT". It features three images: a woman in a white lab coat, a woman in a white lab coat with a product, and a product labeled "Color it Green packets". The presentation software interface is visible, including a toolbar and a slide navigation pane.

The Zoom meeting grid displays several participants. At the top, there is a video thumbnail of Dr. Arwah Madan. Below it, the grid shows participants with their names and profile pictures: 3611_Vaishnavi Kshirsagar_ SY..., 4057_Ashmita Shaikh, 3601-Hrutiya kale, 3642 Shuchi khandelwal, 3681 Rohini Gaikwad, and You. The grid also includes icons for mute, video off, and chat.

7.1.5 Pictures

2020-2021

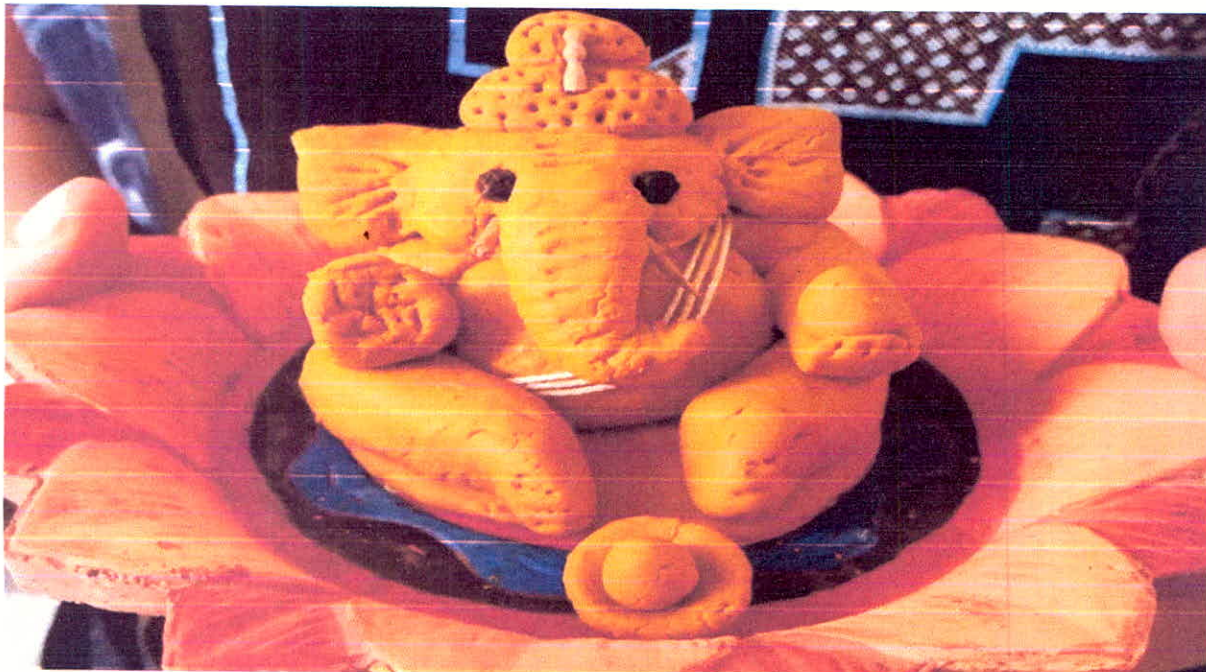
St. Mira's College For Girls Pune
Autonomous Affiliated to Savitribai Phule Pune University

Pic 1 – Mask Making: Using old clothes to make mask.



Pic 2

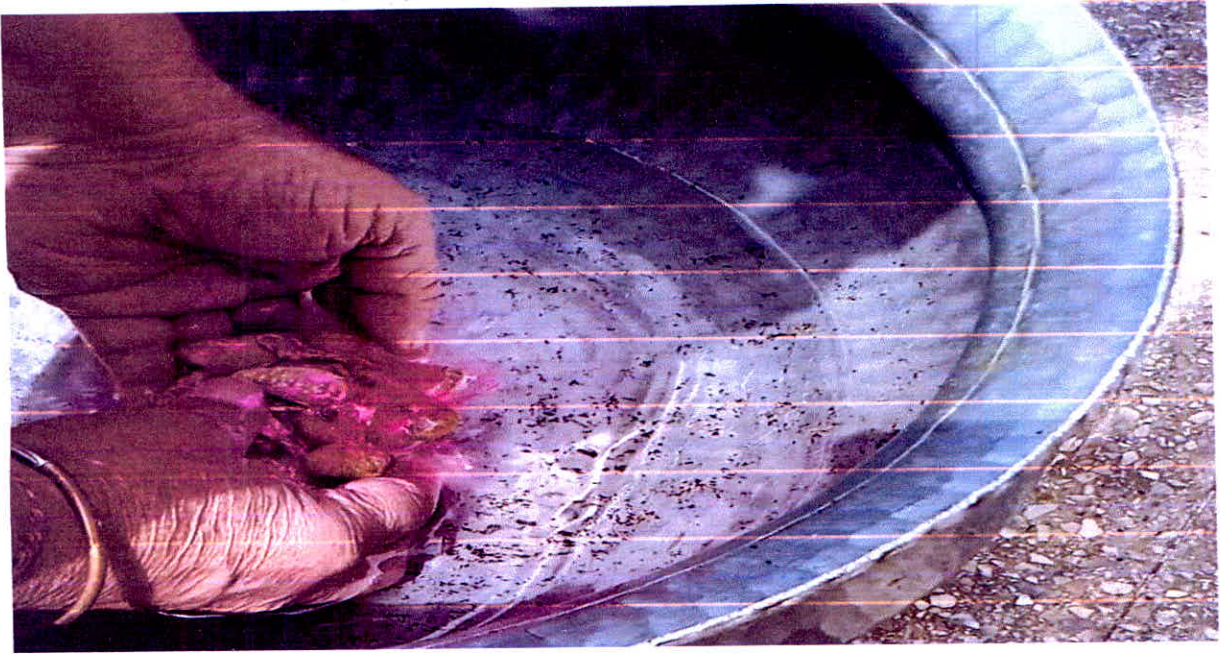
Eco friendly Ganapathi and emersion of Ganapathi in eco-friendly way




Principal Incharge
St. Mira's College for Girls, Pune.

7.15.

St. Mira's College For Girls Pune
Autonomous Affiliated to Savitribai Phule Pune University
PIC-3



Jh
Principal Incharge
St. Mira's College for Girls, Pune.

St. Mira's College For Girls Pune
Autonomous Affiliated to Savitribai Phule Pune University

7.1.5 Pictures

2019-2020

Pic 1 Paper Bag Making: Making use of newspapers to make paper bags leading towards free from plastic

7.1.5



Lat: 18.535299

Long: 73.886196

Pic 2

Green Trek

An active engagement of the students with the city and a clean-up of its environment, there was no geo tag picture, since the activity was in progress at Singahad Road




Principal Incharge
St. Mira's College for Girls, Pune.

7.15

St. Mira's College For Girls Pune
Autonomous Affiliated to Savitribai Phule Pune University



Pic 2 Green Bappa

Using Shaadu Mitti – Making Ganapati with shadu matti encourages the students not to use Plaster of Paris material which will harm the environment



Lat: 18.534908

Long: 73.886179




Principal Incharge
St. Mira's College for Girls, Pune.

7.15

Pic 3 Jumble Sale

Preowned Clothes: Students are encouraged to donate preowned clothes for sustainability in the environment



Lat: 18.535223

Long: 73.886416

Pic 4

Handmade Rakhis: Students are encouraged to sustain the best out of waste material to make rakhis



Lat: 18.534567

Long: 73.886186



JB
Principal Incharge
St. Mira's College for Girls, Pune.

St. Mira's College For Girls Pune
Autonomous Affiliated to Savitribai Phule Pune University

7.1.5 Pictures

2018-2019

Pic 1 Paper Bag Making:

The institute encourages the students to make use of news papers and make paper bags



Lat: 18.5355095

Long: 73.886239



Lat. 18.534999

Long. 73.886444



Jayal
Principal Incharge
St. Mira's College for Girls, Pune.

Pic 2

7.1.5



Flowering beds activity - where students are using the manure to help the sapling to grow healthy and flowers can bloom.

Lat: 18.534743

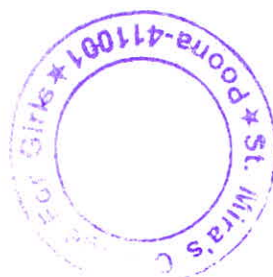
Long: 73.886026



Harvesting Manure activity where dry leaves are used to generate manure.

Lat: 18.534743

Long: 73.886026




Principal Incharge
St. Mira's College for Girls, Pune.

7.1.5

Pic 3

Green Trek

An active engagement of the students with the city and a clean-up of its environment



This picture was taken at Parvati Hill in 2017-2018, therefore no longitude and latitude is available in this picture




Principal Incharge
St. Mira's College for Girls, Pune.

St. Mira's College For Girls Pune
Autonomous Affiliated to Savitribai Phule Pune University

Ban on Plastics

7.1.5 Pictures

2017-2018

Pic 1 Paper Bag Making

which were used for sale of manure harvested on campus.



Lat. 18.535076

Long. 73.886232

Pic 2

Guest Lecture on Positive Thinking and Cleanliness in Pune City

Awareness to be a responsible citizen in keeping Pune City- clean and smart.



Lat. 18.535288




Principal Incharge
St. Mira's College for Girls, Pune.

7.15

St. Mira's College For Girls Pune
Autonomous Affiliated to Savitribai Phule Pune University

Long: 73.886245

Pic 3

Greeting card and Candle making

Greeting card as well as the candles was an exercise in recycling and reuse.



Pic 4

Jumble Sale

Encouraging students to use preowned clothes, every year this activity is conducted by the institution



Lat: 18.535223

Long: 73.886416




Principal Incharge
St. Mira's College for Girls, Pune.

7.1.5

St. Mira's College For Girls Pune
Autonomous Affiliated to Savitribai Phule Pune University

Pic 5

Garden Waste Management

On-campus project for garden waste composting in collaboration with Adar Poonawala



Lat. 18.534703

Long. 73.886112

Pic 6

Sanitary Napkin Donation Drive

95Big FM and a Mumbai based NGO 'Upasana' for the campaign 'KAHO NA PAD HAI'




Principal Incharge
St. Mira's College for Girls, Pune.

7.1.5

St. Mira's College For Girls Pune
Autonomous Affiliated to Savitribai Phule Pune University
Lat. 18.535288
Long. 73.886245

Pic 7

Eco Friendly Ganapathi, RJ Shangram from Big FM, Pune visiting our college



Lat: 18.534823
Long: 73.886272

Pic 8



JB
Principal Incharge
St. Mira's College for Girls, Pune.

7.1.5



Lat. 18.535076

Long. 73.886232

Pic 8

Green Harvesting at St. Mira's College Garden area



Lat: 18.534743

Long: 73.886026




Principal Incharge
St. Mira's College for Girls, Pune.

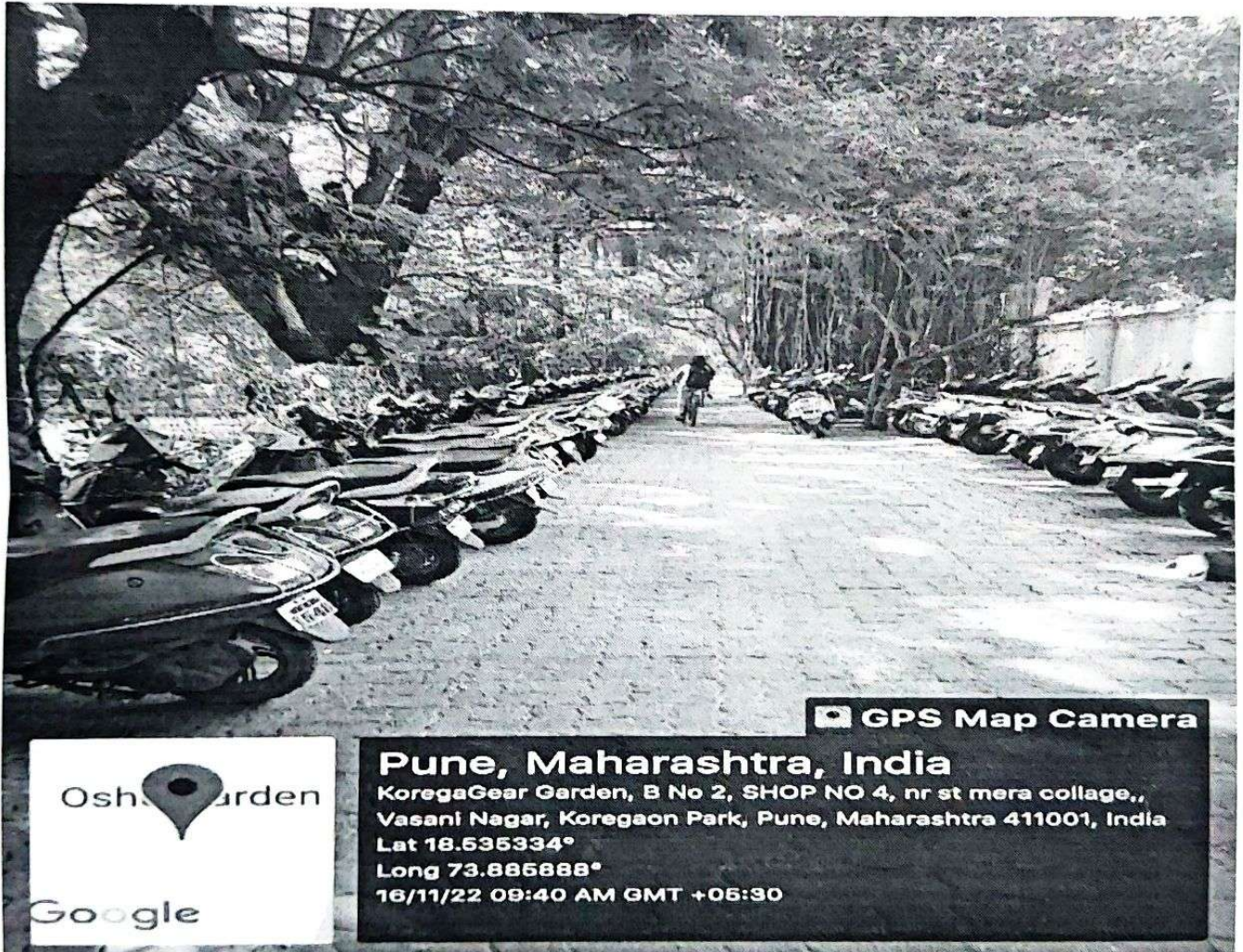
St. Mira's College for Girls, Pune

Autonomous – Affiliated to SPPU

7.1.5_ Additional Information

Additional Information No: 2 – **Pedestrian Friendly Pathways**

Picture – 1 – Pathways for students



Jayesh
Principal Incharge
St. Mira's College for Girls

St. Mira's College for Girls, Pune

Autonomous – Affiliated to SPPU

7.1.5_ Additional Information Number 2: Use of Bicycle

Picture – 2 Students Parking their bicycle



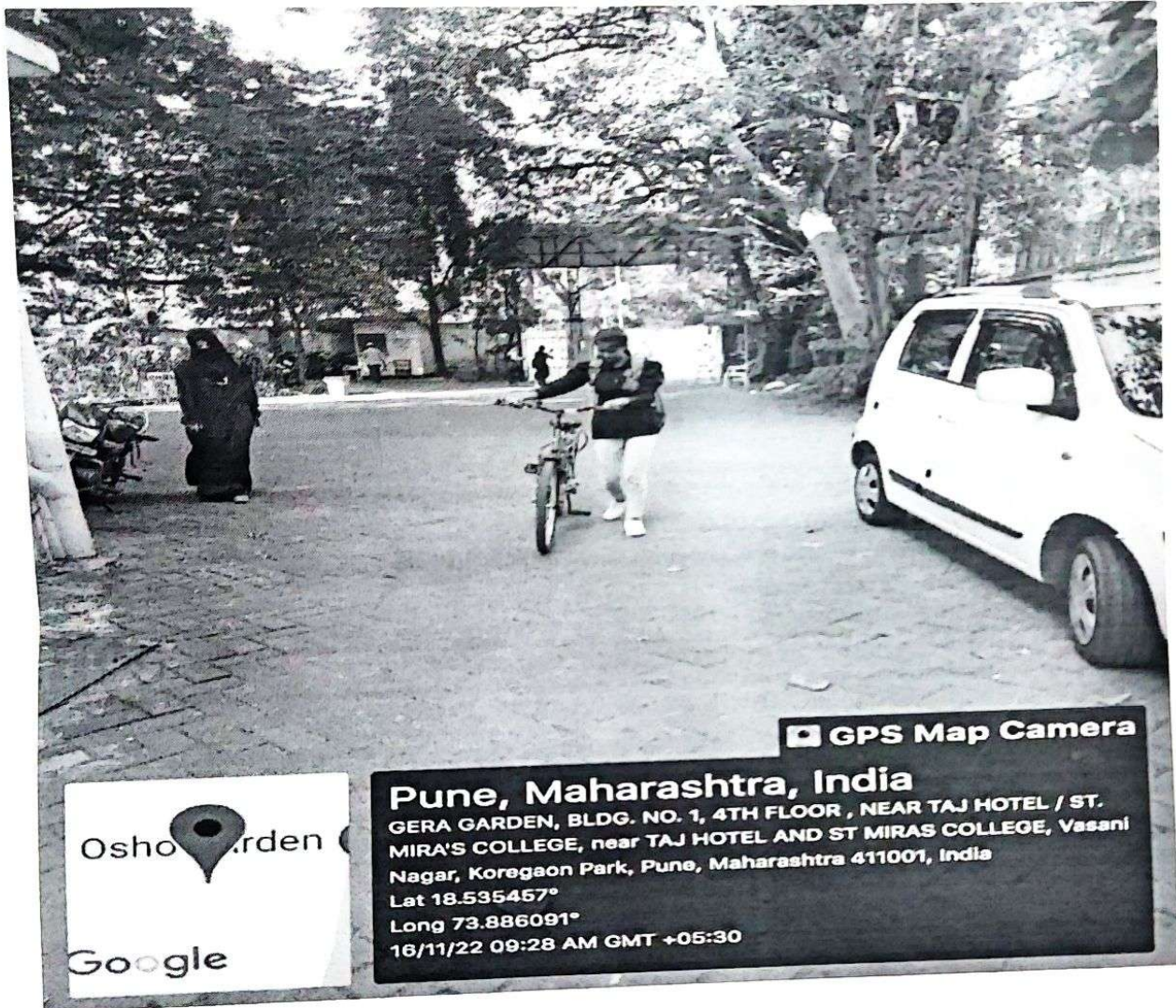
Jaysh
Principal Yachage
St. Mira's College for Girls

St. Mira's College for Girls, Pune

Autonomous – Affiliated to SPPU

Picture 3 – Use of Bicycles

Student walking to Park her Bicycles at the entrance gate



Jayab
Principal Incharge
St. Mira's College for Girls