

**St. Mira's College for Girls, Pune**  
**Autonomous (Affiliated to Savitribai Phule Pune University)**

**Geotagged photographs of the facilities**

**7.1.3**

*Describe the facilities in the Institution for the management of the following types of degradable and non-degradable waste*

**INDEX**

S. No.	Description
1	<b>SOLID WASTE MANAGEMENT</b>
	<b>Photo 1-11</b> Disposal Bins (at Garden, Bathroom, Ground, etc.)
	<b>Photo 12</b> Glutton Machine - Adar Poonawalla Foundation
	<b>Photo 13</b> Campus Cleanliness Drive
	<b>Photo 14</b> Green Guardians hanging up Red Dot Bags in washrooms
	<b>Photo 15-16</b> Adar Poonawalla Cleaning Van
	<b>Photo 17-19</b> Garden waste disposal
2	<b>E-WASTE MANAGEMENT</b>
	<b>Photo 20.A-20.B</b> E-waste Bins
	<b>Photo 21-22</b> Collection of E-waste
	<b>Photo 23</b> E-waste Collection Drive
3	<b>HAZARDOUS CHEMICAL WASTE MANAGEMENT</b>
	<b>Photo 24</b> Very dilute concentrations for volumetric analysis
	<b>Photo 25-27</b> Laboratory Glassware Disposal
	<b>Photo 28</b> Student Performing experiment by taking very diluted solutions
4	<b>WASTE RECYCLING SYSTEM</b>
	<b>Photo 29-32</b> Harvesting Manure, Manuring flower beds and Sale of Manure
5	<b>ACTIVITIES</b>
	<b>Photo 33</b> Guest lecture on Sustainable Fashion
	<b>Photo 34 - 35</b> Poster Competition: Go Green for Sustainable Living
	<b>Photo 36</b> Awareness drive on 'Zero Garbage Model'
	<b>Photo 37-38</b> Workshop on – CCI Sustainability-Waste Segregation and Disposal
	<b>Photo 39</b> Awareness Session on 'Solid Waste Management
	<b>Photo 40</b> PPT on Competition on Environmental Sustainability
	<b>Photo 41-42</b> Punaravaratan Clay Recycling Campaign
	<b>Photo 43</b> Green Bappa making workshop
	<b>Photo 44</b> Webinar on Sustainable Garden
	<b>Photo 45-53</b> Newspaper Bag Making (Annual activity) - Red Dot Campaign
	<b>Photo 54</b> Greeting Making (Best out of waste)
	<b>Photo 55 - 56</b> Candle Making (Best out of waste)
	<b>Photo 57</b> Rakhi Making – Best out of Waste
	<b>Photo 58 - 63</b> Jumble Sale of Preowned apparel
	<b>Photo 64 - 65</b> Godhadi Making -Best out of Waste
	<b>Photo 66 - 67</b> Green Guardians with badges
	<b>Photo 68</b> Guest Lecture on 'Positive Thinking and Cleanliness of Pune

**St. Mira's College for Girls, Pune  
Autonomous (Affiliated to Savitribai Phule Pune University)**

**Geotagged photographs of the facilities**

**SOLID WASTE MANAGEMENT**



**Photo 1. Disposal Bin\_5 towards Ground**



**Photo 2. Bins at Play Ground**



**Photo 3. Bins at Play Ground**



**Photo 4. Disposal Bin at Garden**

**St. Mira's College for Girls, Pune  
Autonomous (Affiliated to Savitribai Phule Pune University)**

**Geotagged photographs of the facilities**



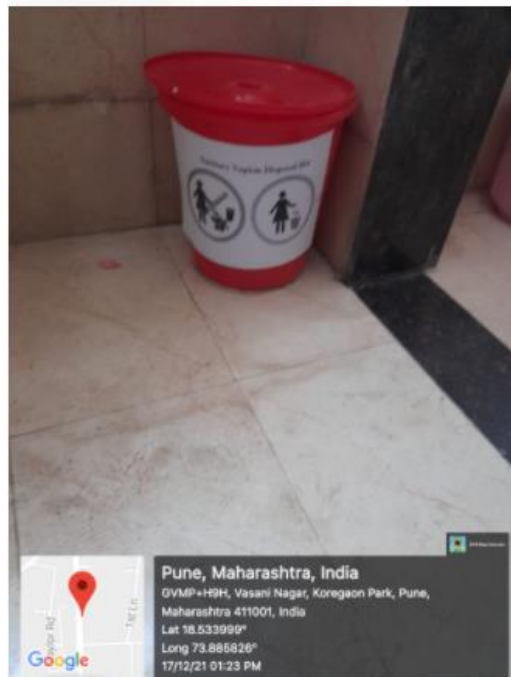
**Photo 5. Disposal Bin at Garden**



**Photo 6. Disposal Bin at Garden  
Lat 18.534708° Long 73.886052°**



**Photo 7. Disposal Bin outside Sanctuary Hall**



**Photo 8. Sanitary Napkin Disposal Bin\_1**

**St. Mira's College for Girls, Pune  
Autonomous (Affiliated to Savitribai Phule Pune University)**

**Geotagged photographs of the facilities**



**Photo 9. Sanitary Napkin Disposal Bin\_2**



**Photo 10. Sanitary Napkin Disposal Bin\_3**



**Photo 11. Sanitary Napkin Disposal Bin\_4  
Lat 18.533999 Long 73.885828**

**St. Mira's College for Girls, Pune  
Autonomous (Affiliated to Savitribai Phule Pune University)**

**Geotagged photographs of the facilities**



**Photo 12. Glutton Machine - Adar Poonawalla Foundation  
Lat 18.534708 Long 73.886052**



**Photo 13. Campus Cleanliness Drive  
Lat 18.534708 Long 73.886052**



**Photo 14. Green Guardians hanging up  
Red Dot Bags in washrooms  
Lat 18.533999 Long 73.885828**

**St. Mira's College for Girls, Pune  
Autonomous (Affiliated to Savitribai Phule Pune University)**

**Geotagged photographs of the facilities**



**Photo 15 and Photo 16. Adar Poonawalla Cleaning Van**



**Photo17 Garden Waste Disposal Lat 18.534708 Long 73.886052**

**St. Mira's College for Girls, Pune  
Autonomous (Affiliated to Savitribai Phule Pune University)**

**Geotagged photographs of the facilities**



**Photo18 and 19 Garden Waste disposal  
Lat 18.534708 Long 73.886052**

**St. Mira's College for Girls, Pune  
Autonomous (Affiliated to Savitribai Phule Pune University)**

**Geotagged photographs of the facilities**

**E-WASTE MANAGEMENT**



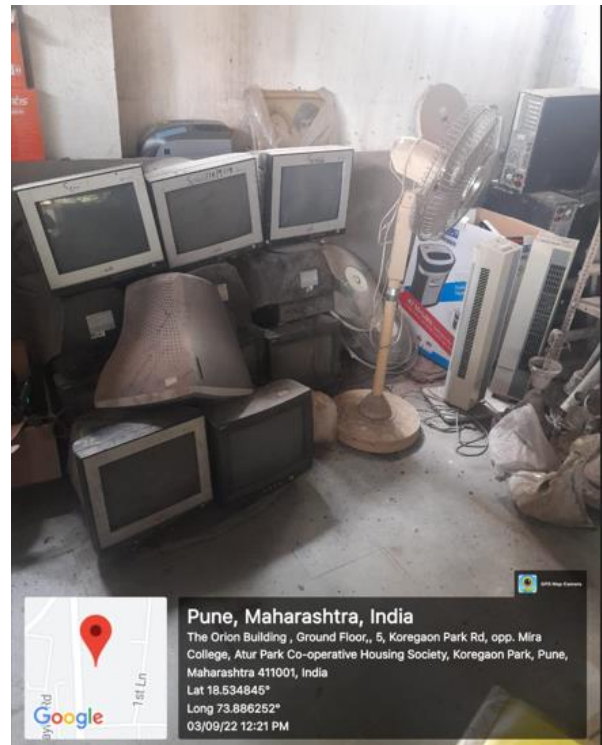
**Photo 20.A E-waste Bins at Admin Block  
Lat 18.534969° Long 73.886293°**



**Photo 20.B E-waste Bins at IT Lab  
Lat 18.53475° Long 73.886096°**



**Pune, Maharashtra, India**  
GERA GARDEN, BLDG. NO. 1, 4TH FLOOR, NEAR TAJ HOTEL / ST. MIRA'S COLLEGE, near TAJ HOTEL AND ST MIRAS COLLEGE, Vasani Nagar, Koregaon Park, Pune, Maharashtra 411001, India  
Lat 18.535216°  
Long 73.886436°



**Pune, Maharashtra, India**  
The Orion Building , Ground Floor,, 5, Koregaon Park Rd, opp. Mira College, Atur Park Co-operative Housing Society, Koregaon Park, Pune, Maharashtra 411001, India  
Lat 18.534845°  
Long 73.886252°  
03/09/22 12:21 PM

**Photo 21 and 22 Collection of E-waste**



**St. Mira's College for Girls, Pune  
Autonomous (Affiliated to Savitribai Phule Pune University)**

**Geotagged photographs of the facilities**



**Photo 23 E-Waste Collection Drive**

**St. Mira's College for Girls, Pune  
Autonomous (Affiliated to Savitribai Phule Pune University)**

**Geotagged photographs of the facilities**

**HAZARDOUS CHEMICAL WASTE MANAGEMENT**



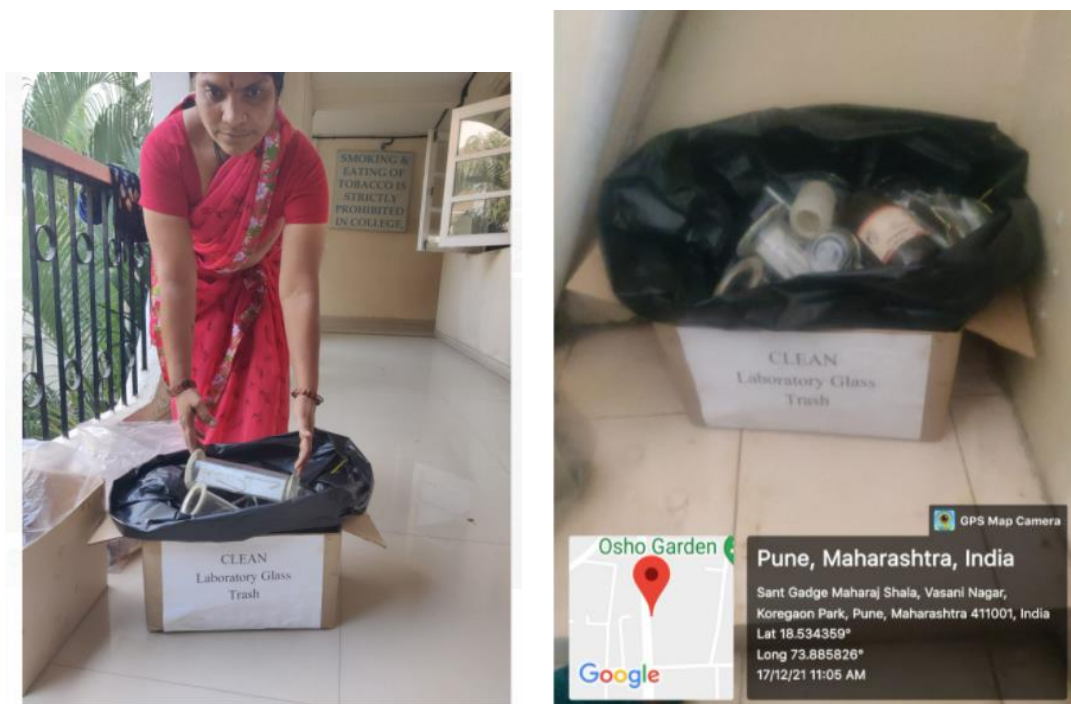
**Photo 24 Very dilute concentrations for volumetric analysis**



**Photo 25 Laboratory Glassware Disposal**

**St. Mira's College for Girls, Pune  
Autonomous (Affiliated to Savitribai Phule Pune University)**

**Geotagged photographs of the facilities**



**St. Mira's College for Girls, Pune  
Autonomous (Affiliated to Savitribai Phule Pune University)**

**Geotagged photographs of the facilities**

**WASTE RECYCLING SYSTEM**



**Photo 29 Harvesting Manure (2018-19) Lat 18.534702 Long 73.888176**



**Photo 30 Manuring Flowerbeds (2018-19) Lat 18.534702 Long 73.888176**

**St. Mira's College for Girls, Pune  
Autonomous (Affiliated to Savitribai Phule Pune University)**

**Geotagged photographs of the facilities**



**Photo 31 Harvesting of Manure (2017-18) Lat 18.534702 Long 73.888176**

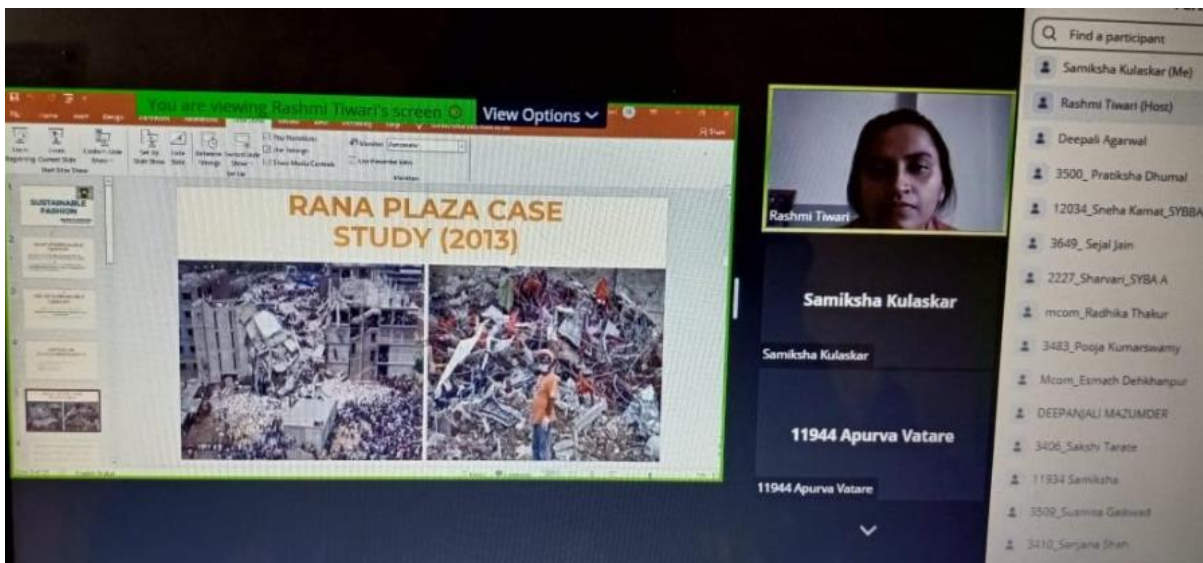


**Photo 32 Jumble Sale - Garden Manure (2017-18) Lat 18.5345109 Long 73.886202**

**St. Mira's College for Girls, Pune  
Autonomous (Affiliated to Savitribai Phule Pune University)**

**Geotagged photographs of the facilities**

**ACTIVITIES**



**Photo 33 Guest lecture on Sustainable Fashion (2021-22)**



**Photo 34 Entries for Poster Competition: Go Green for Sustainable Living (2021-22)**

**St. Mira's College for Girls, Pune  
Autonomous (Affiliated to Savitribai Phule Pune University)**

**Geotagged photographs of the facilities**



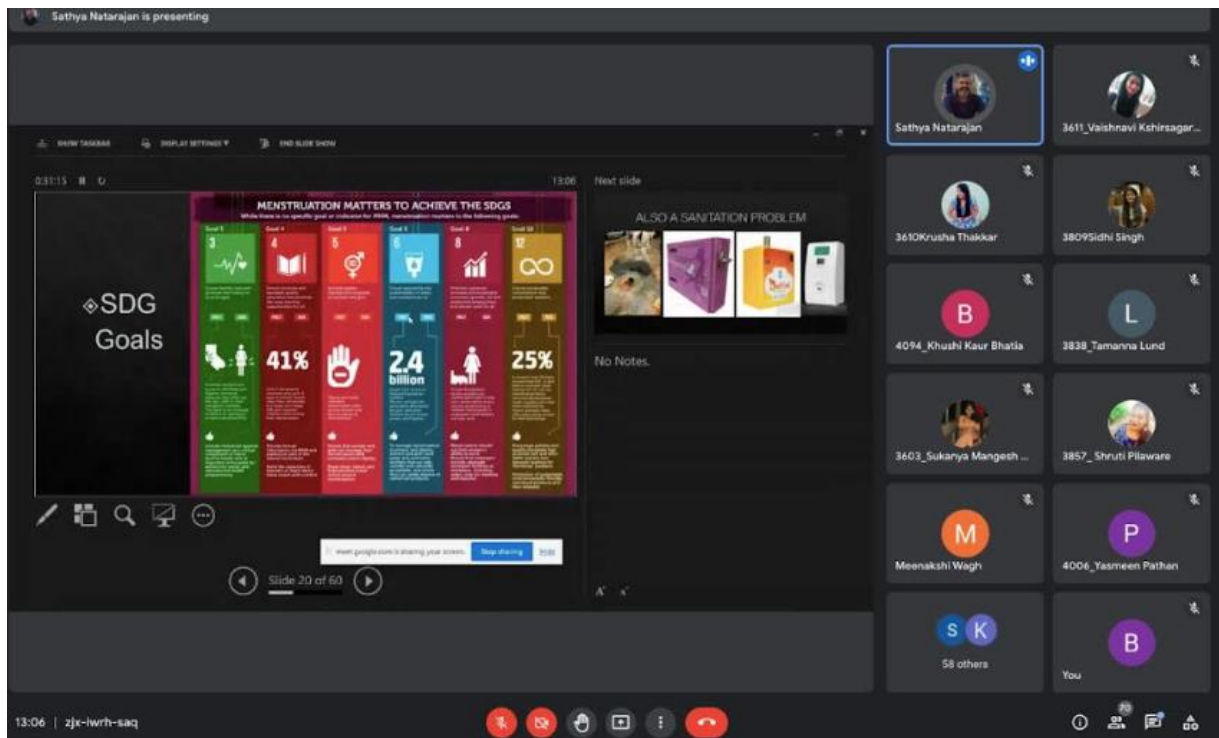
**Photo 35 Entries for Poster Competition: Go Green for Sustainable Living (2021-22)**



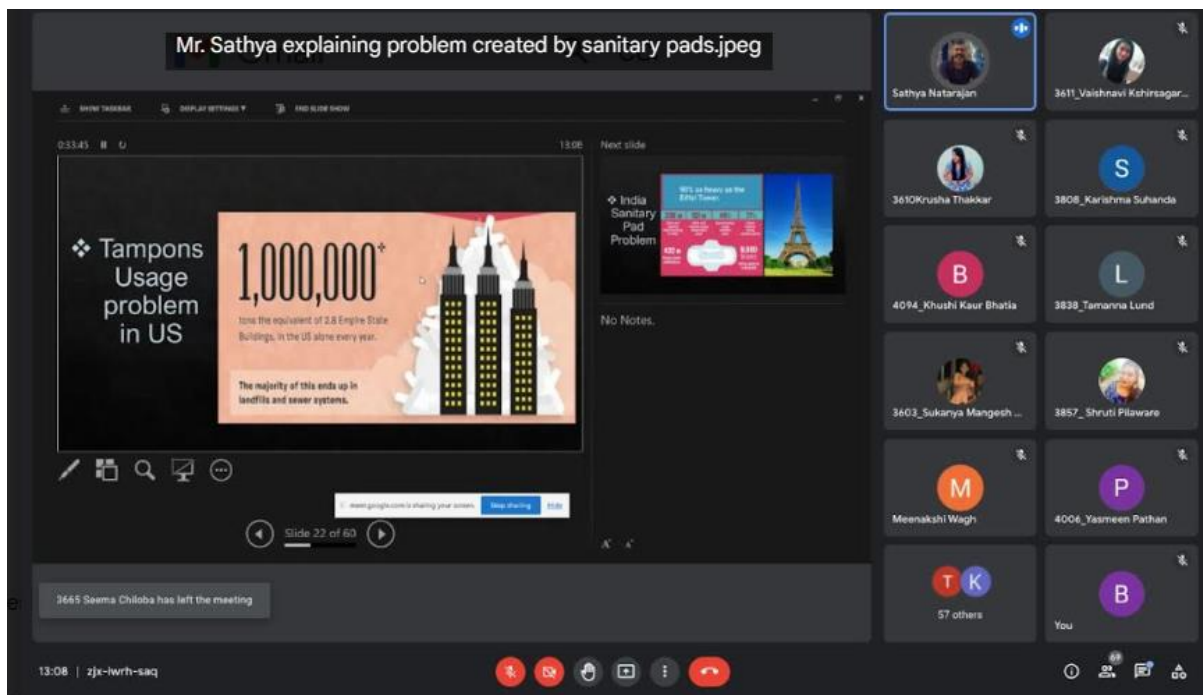
**Photo 36 Awareness drive on 'Zero Garbage Model' (2021-22)**

**St. Mira's College for Girls, Pune  
Autonomous (Affiliated to Savitribai Phule Pune University)**

**Geotagged photographs of the facilities**



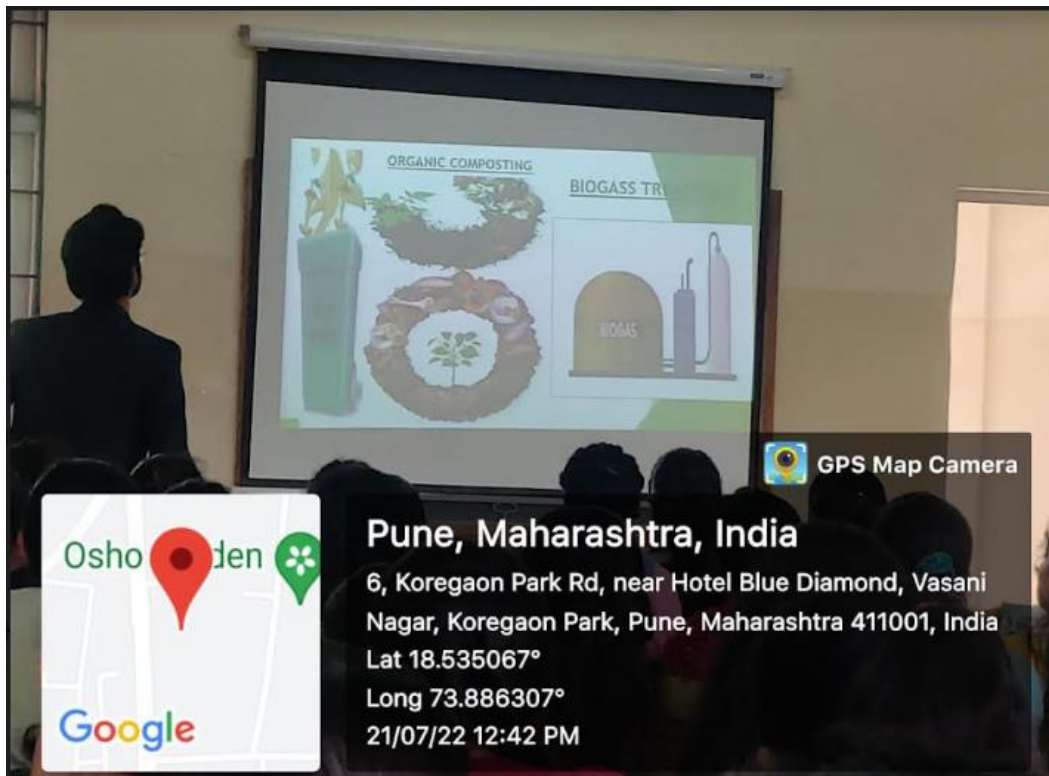
**Photo 37 and 38 Workshop on – “CCI Sustainability (Corporate, Community, Individual) Waste Segregation and Disposal” (2021-22)**





**St. Mira's College for Girls, Pune  
Autonomous (Affiliated to Savitribai Phule Pune University)**

**Geotagged photographs of the facilities**



**Photo 39 Awareness Session on 'Solid Waste Management-Clean City Initiative (2021-22)**



**Photo 40 PowerPoint Presentation Competition on Environmental Sustainability (2021-22)**

**St. Mira's College for Girls, Pune  
Autonomous (Affiliated to Savitribai Phule Pune University)**

**Geotagged photographs of the facilities**



**Photo 41 and 42**

**Punaravaratan Clay Recycling Campaign (2021-22)**

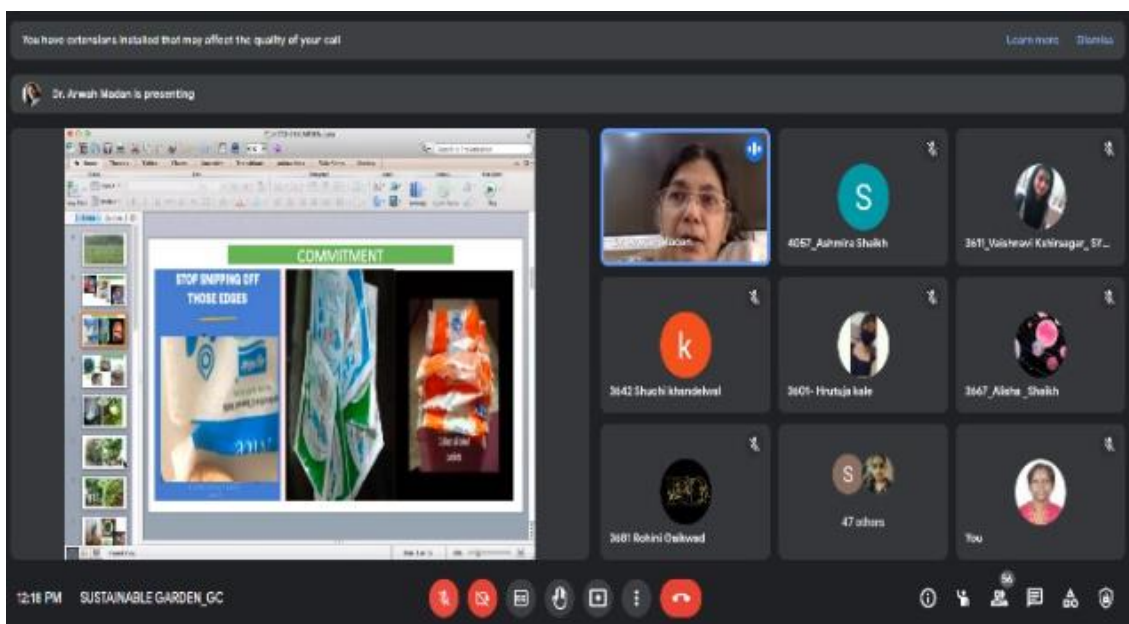


**St. Mira's College for Girls, Pune  
Autonomous (Affiliated to Savitribai Phule Pune University)**

**Geotagged photographs of the facilities**



**Photo 43 Green Bappa making workshop (2021-22)**



**Photo 44 Webinar on Sustainable Garden (2021-22)**

**St. Mira's College for Girls, Pune  
Autonomous (Affiliated to Savitribai Phule Pune University)**

**Geotagged photographs of the facilities**



**Photo 45 and 46 News Paper Bag Making (2017-18; 2018-19)  
Lat 18.534868 Long 73.886283**



**Photo 47 and 48 Newspaper Bag making activity – Best out of Waste (2018-19)  
Lat 18.534868 Long 73.886283**

**St. Mira's College for Girls, Pune  
Autonomous (Affiliated to Savitribai Phule Pune University)**

**Geotagged photographs of the facilities**



**Photo 49 and 50 Green Guardians – Red Dot Campaign for Sanitary wastes (2018-19)  
Lat 18.534868 Long 73.886283**



**Photo 51 Annual Activity: News Paper Bag Making (2019-20)  
Lat 18.534864 Long 73.886244**

**St. Mira's College for Girls, Pune  
Autonomous (Affiliated to Savitribai Phule Pune University)**

**Geotagged photographs of the facilities**



**Photo 52 Annual Activity: News Paper Bag Making (2019-20)  
Lat 18.534864 Long 73.886244**



**Photo 53 SIP-Student involvement in  
News Paper Bag Making (2019-20)**



**Photo 54 Greeting Making (Best out of waste)  
Lat 18.534864 Long 73.886244**

**St. Mira's College for Girls, Pune  
Autonomous (Affiliated to Savitribai Phule Pune University)**

**Geotagged photographs of the facilities**



**Photo 55 and 56 Candle Making (Best out of waste)**



**Photo 57 Rakhhi Making – Best out of Waste (2019-20)**

**St. Mira's College for Girls, Pune  
Autonomous (Affiliated to Savitribai Phule Pune University)**

**Geotagged photographs of the facilities**



**Photo 58 and 59 Jumble Sale of Preowned apparel**

**A step towards sustainability (2017-18, 2018-19) Lat 18.535109 Long 73.886202**



**Photo 60 and 61 Jumble Sale of Preowned apparel**

**A step towards sustainability (2018-19, 2019-20) Lat 18.535109 Long 73.886202**



**Photo 62 and 63 Jumble Sale of Preowned apparel**

**A step towards sustainability (2019-20) Lat 18.535109 Long 73.886202**



**St. Mira's College for Girls, Pune  
Autonomous (Affiliated to Savitribai Phule Pune University)**

**Geotagged photographs of the facilities**



**Photo 64. Godhadi Making -Best out of Waste (2019-2020)**



**Photo 65. Godhadi Making -Best out of Waste (2019-2020)**

**St. Mira's College for Girls, Pune  
Autonomous (Affiliated to Savitribai Phule Pune University)**

**Geotagged photographs of the facilities**



**Photo 66 and 67 Green Guardians with badges 2018-19**



**Photo 68 Guest Lecture on 'Positive Thinking and Cleanliness of Pune by Minocher Patel  
(2017-18)**